

**PARCEL A**

2/6/2020

Scale: 1 inch= 21 feet

File:

Tract 1: 0.0850 Acres (3703 Sq. Feet), Closure: n70.1218e 0.01 ft. (1/40511), Perimeter=413 ft.

01 n47.5451e 101.12

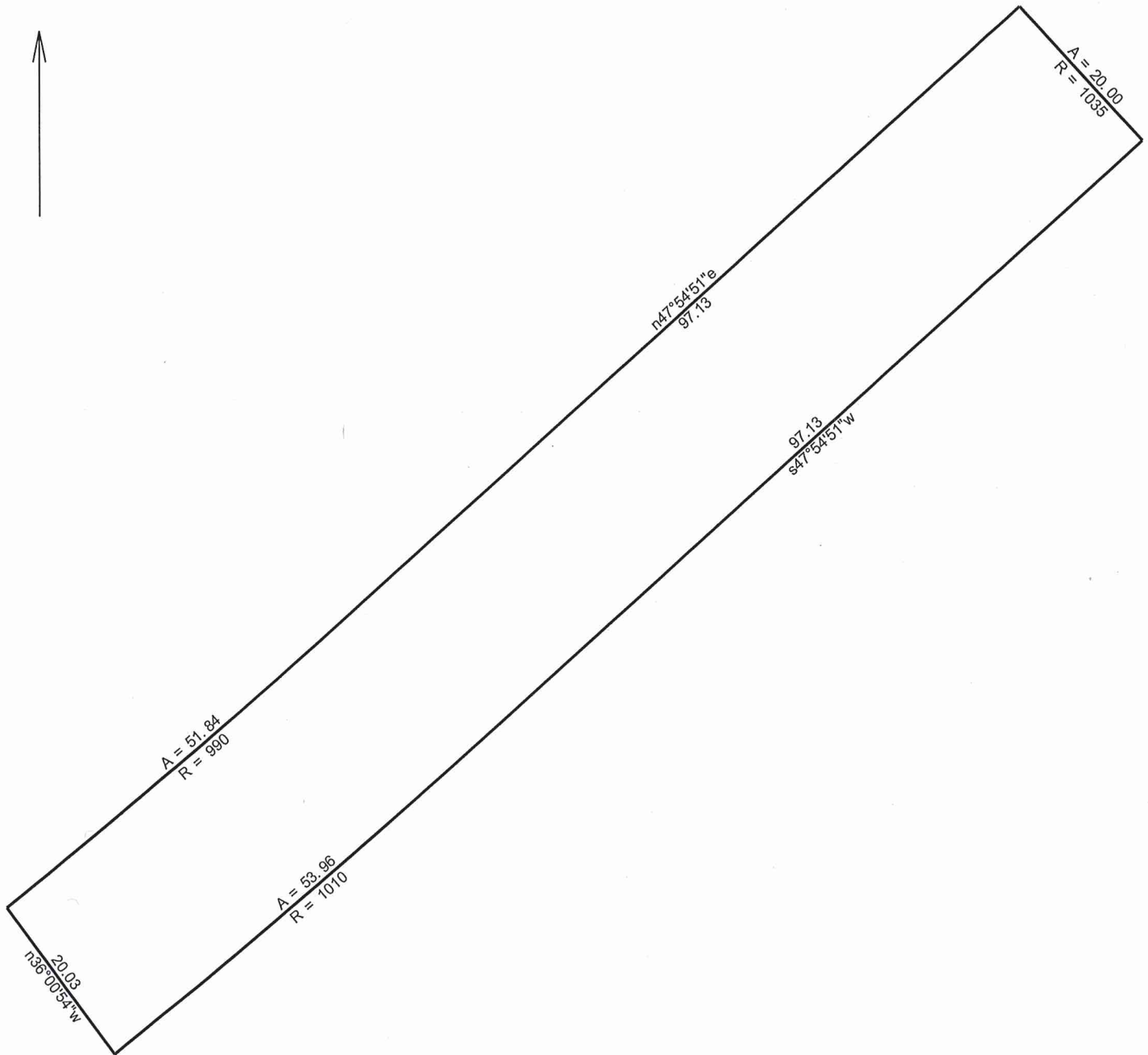
02 Rt, r=1020.00, arc=79.15, chord=n50.0814e 79.13

03 s66.5544e 23

04 Lt, r=1000.00, arc=88.86, chord=s50.2735w 88.83

05 s47.5451w 101.12

06 Rt, r=965.00, arc=20.00, chord=n42.0509w 20.00



**PARCEL B**

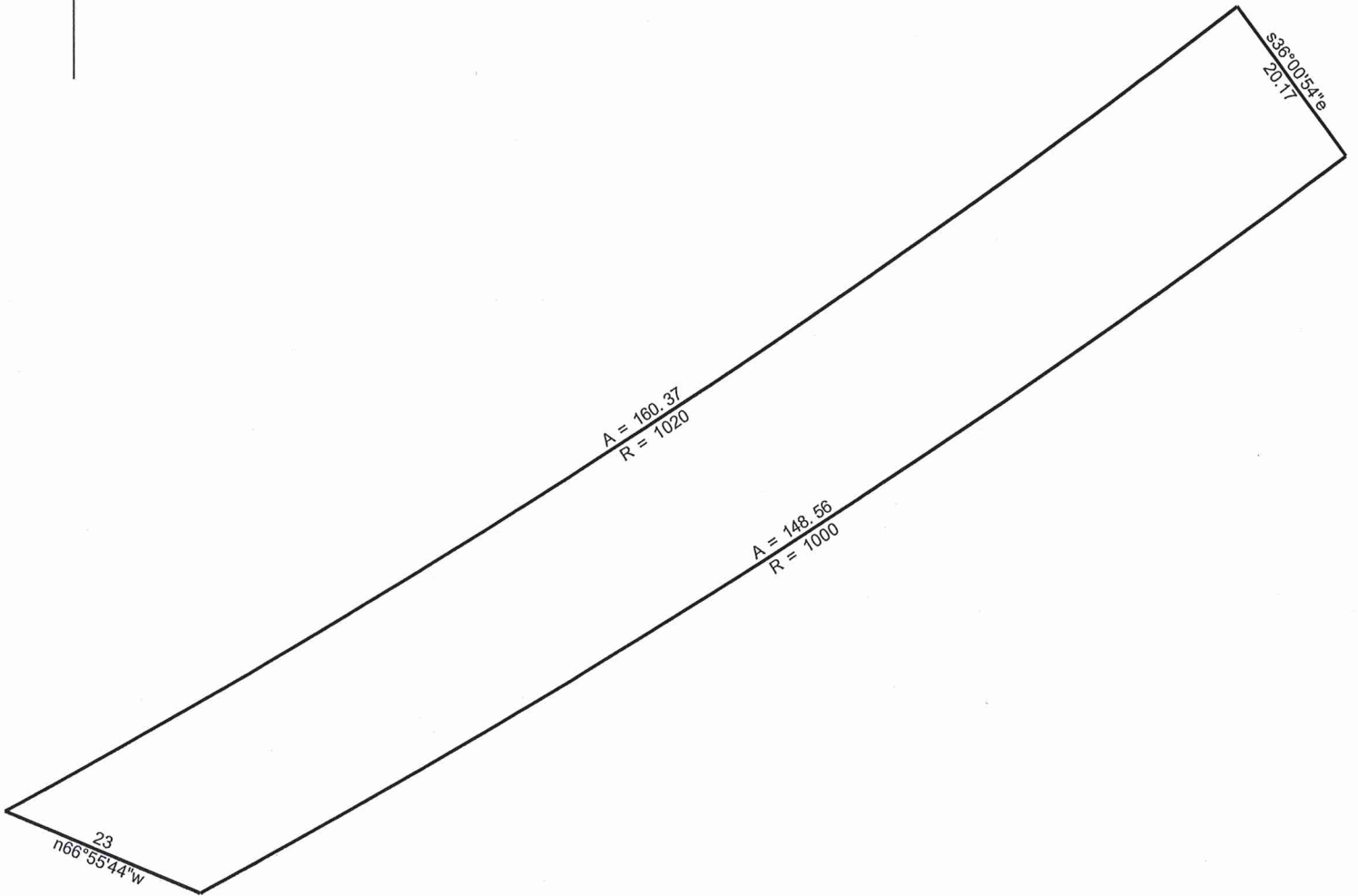
2/6/2020

Scale: 1 inch= 17 feet

File:

Tract 1: 0.0689 Acres (3000 Sq. Feet), Closure: n00.0000e 0.00 ft. (1/170068), Perimeter=340 ft.

- 01 s47.5451w 97.13
- 02 Rt, r=1010.00, arc=53.96, chord=s49.2641w 53.95
- 03 n36.0054w 20.03
- 04 Lt, r=990.00, arc=51.84, chord=n49.2452e 51.83
- 05 n47.5451e 97.13
- 06 Lt, r=1035.00, arc=20.00, chord=s42.0509e 20.00



**PARCEL C**

2/6/2020

Scale: 1 inch= 19 feet

File:

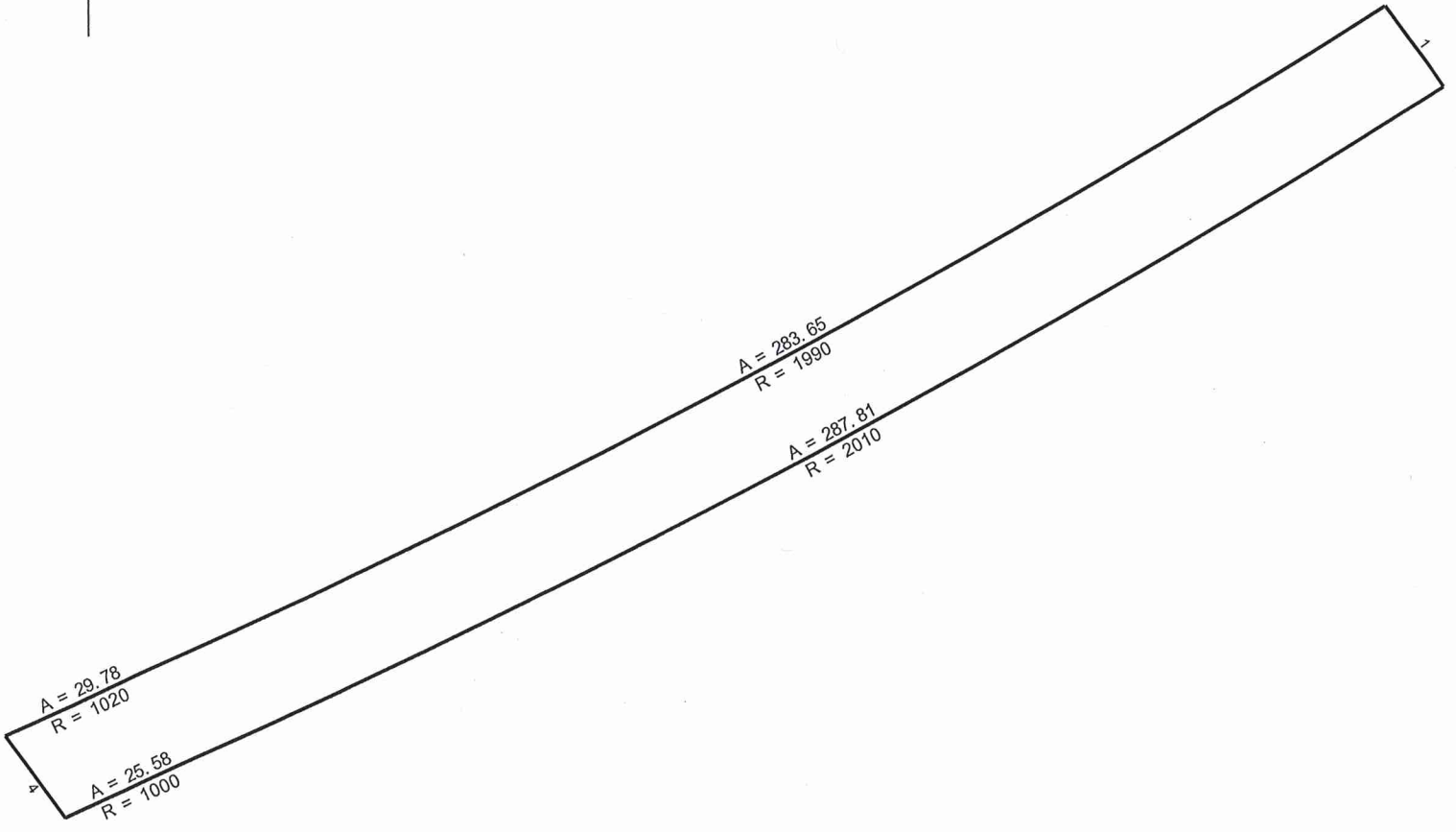
Tract 1: 0.0680 Acres (2962 Sq. Feet), Closure: s83.3735w 0.01 ft. (1/55524), Perimeter=352 ft.

01 s36.0054e 20.17

02 Rt, r=1000.00, arc=148.56, chord=s57.1540w 148.42

03 n66.5544w 23

04 Lt, r=1020.00, arc=160.37, chord=n56.5152e 160.20



**PARCEL D**

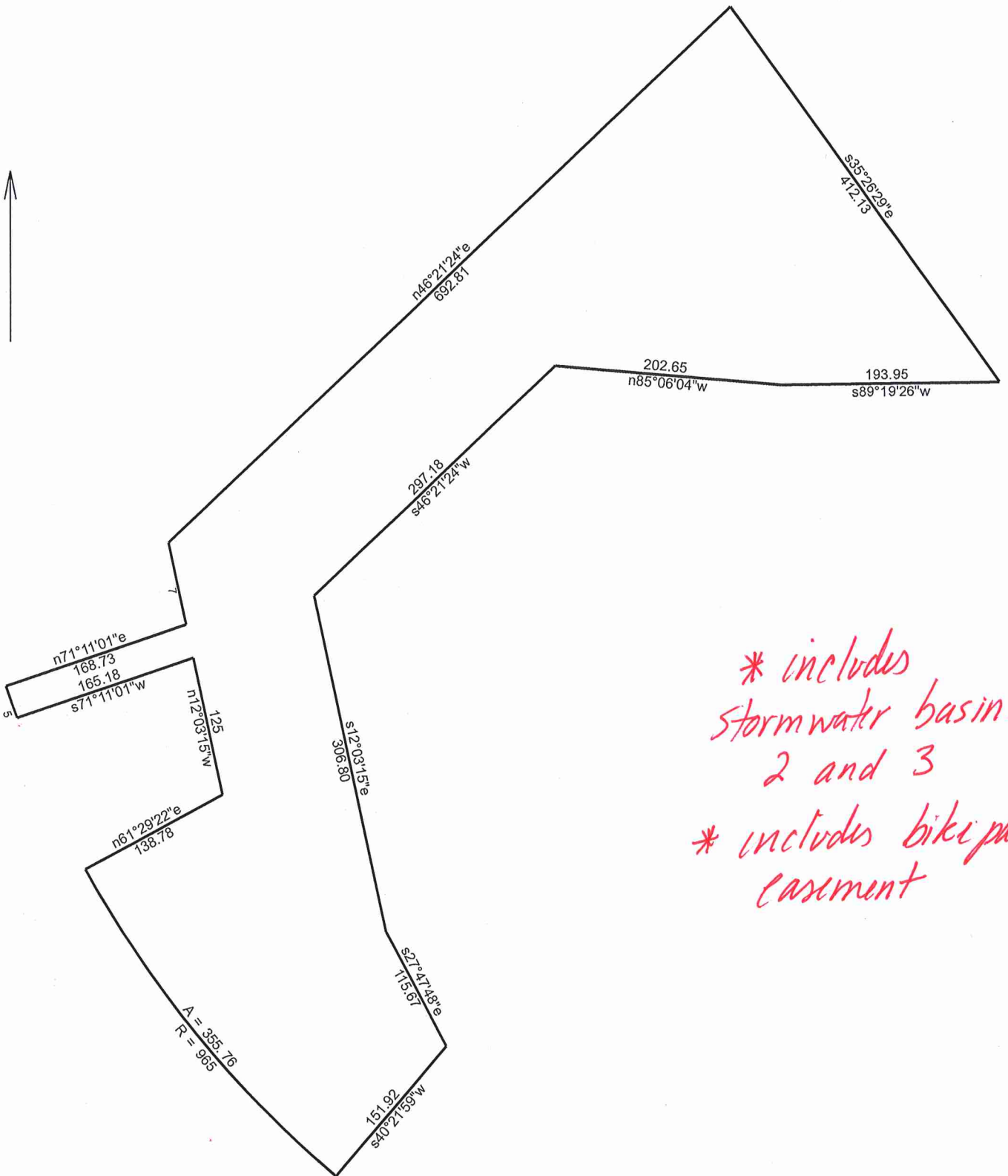
2/6/2020

Scale: 1 inch= 37 feet

File:

Tract 1: 0.1439 Acres (6266 Sq. Feet), Closure: n00.0000e 0.00 ft. (1/229099), Perimeter=667 ft.

- 01 s36.0054e 20.04
- 02 Rt, r=2010.00, arc=287.81, chord=s61.4654w 287.56
- 03 Rt, r=1000.00, arc=25.58, chord=s65.0903w 25.58
- 04 n36.0054w 20.33
- 05 Lt, r=1020.00, arc=29.78, chord=n65.0250e 29.78
- 06 Lt, r=1990.00, arc=283.65, chord=n61.4801e 283.41



**PARCEL E**

2/6/2020

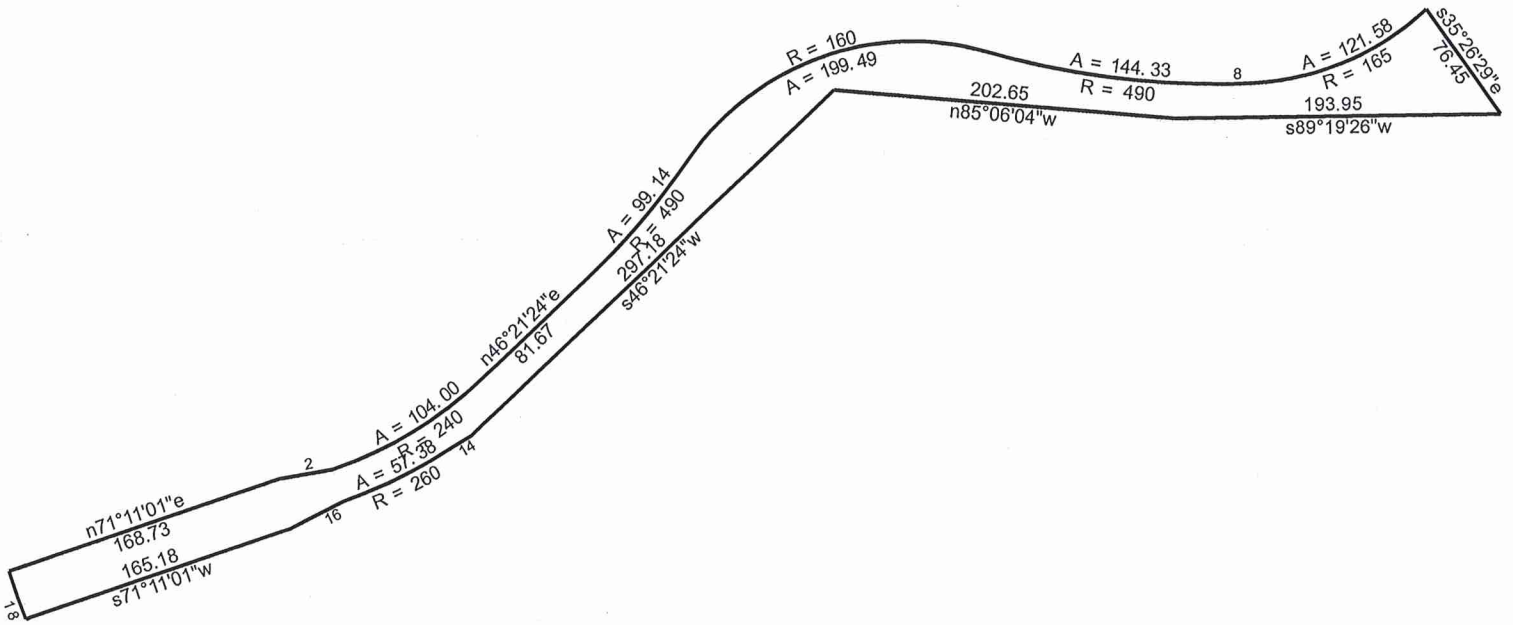
Scale: 1 inch = 127 feet

File:

Tract 1: 5.0258 Acres (218925 Sq. Feet), Closure: n48.0654e 0.01 ft. (1/445731), Perimeter=3431 ft.

- |   |                     |
|---|---------------------|
| 01 Rt, r=965.00, arc=355.76, chord=n39.0420w 353.75 | 11 n85.0604w 202.65 |
| 02 n61.2922e 138.78                                 | 12 s46.2124w 297.18 |
| 03 n12.0315w 125                                    | 13 s12.0315e 306.80 |
| 04 s71.1101w 165.18                                 | 14 s27.4748e 115.67 |
| 05 Rt, r=965.00, arc=30.00, chord=n18.4859w 30.00   | 15 s40.2159w 151.92 |
| 06 n71.1101e 168.73                                 |                     |
| 07 n12.0315w 74.79                                  |                     |
| 08 n46.2124e 692.81                                 |                     |
| 09 s35.2629e 412.13                                 |                     |
| 10 s89.1926w 193.95                                 |                     |

\* Bike path within Parcel E



OPEN SPACE

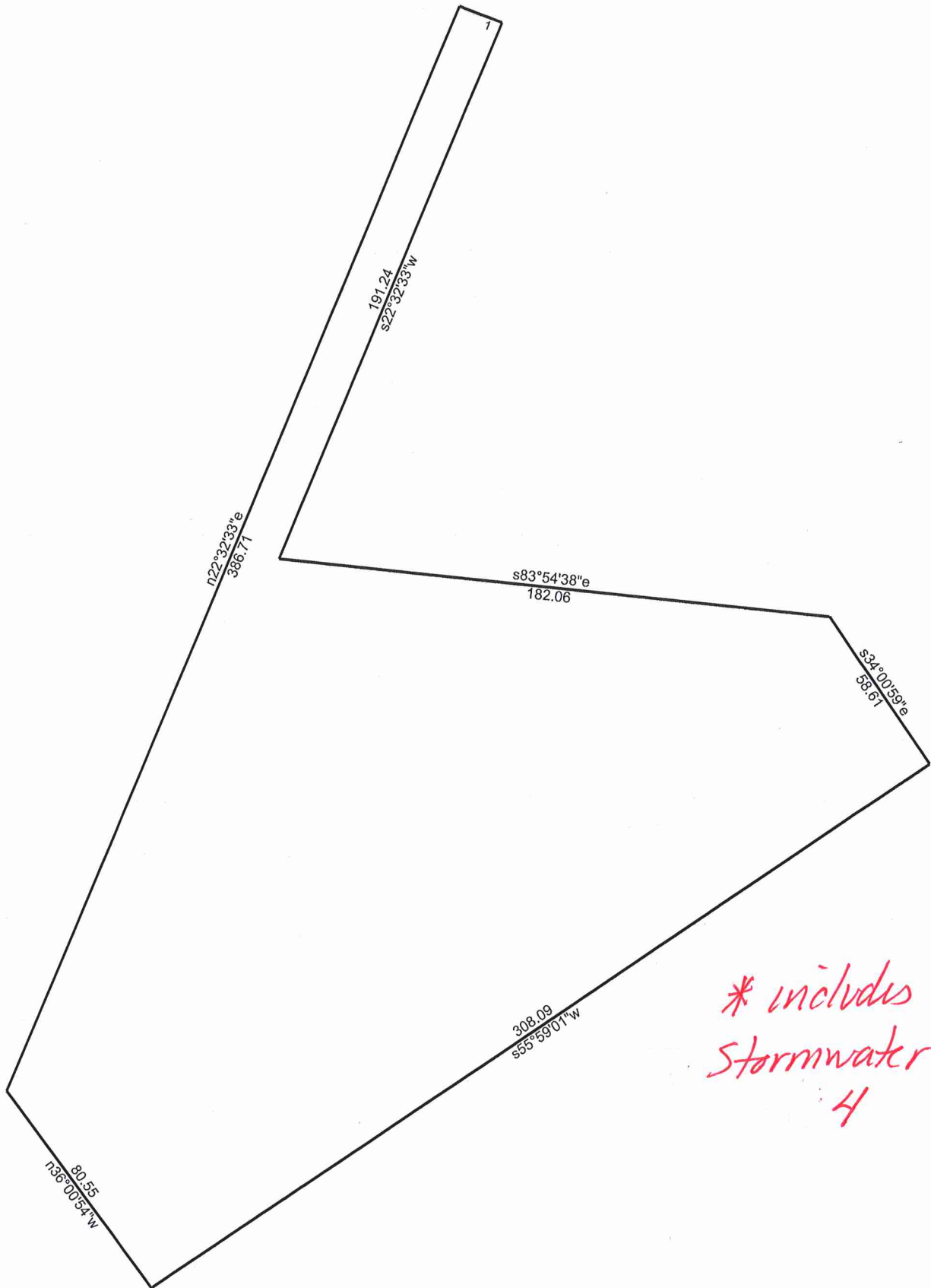
2/6/2020

Scale: 1 inch= 114 feet

File:

Tract 1: 0.6001 Acres (26142 Sq. Feet), Closure: s85.0530w 0.01 ft. (1/316931), Perimeter=2046 ft.

- |   |   |
|---|---|
| 01 n71.1101e 168.73                                 | 12 n85.0604w 202.65                               |
| 02 n80.0441e 32.34                                  | 13 s46.2124w 297.18                               |
| 03 Lt, r=240.00, arc=104.00, chord=n58.4612e 103.19 | 14 s58.3217w 27.74                                |
| 04 n46.2124e 81.67                                  | 15 Rt, r=260.00, arc=57.38, chord=s64.5139w 57.26 |
| 05 Lt, r=490.00, arc=99.14, chord=n40.3338e 98.97   | 16 s63.1006w 35.86                                |
| 06 Rt, r=160.00, arc=199.49, chord=n70.2856e 186.82 | 17 s71.1101w 165.18                               |
| 07 Lt, r=490.00, arc=144.33, chord=s82.1417e 143.81 | 18 Rt, r=965.00, arc=30.00, chord=n18.4859w 30.00 |
| 08 n89.1926e 7.91                                   |   |
| 09 Lt, r=165.00, arc=121.58, chord=n68.1255e 118.85 |   |
| 10 s35.2629e 76.45                                  |   |
| 11 s89.1926w 193.95                                 |   |



*\* includes  
Stormwater basin  
4*

**PARCEL F**

2/6/2020

Scale: 1 inch= 48 feet

File:

Tract 1: 0.9768 Acres (42551 Sq. Feet), Closure: n00.0000e 0.00 ft. (1/380236), Perimeter=1222 ft.

01 Lt, r=340.00, arc=15.00, chord=s68.4318e 15.00

07 n22.3233e 386.71

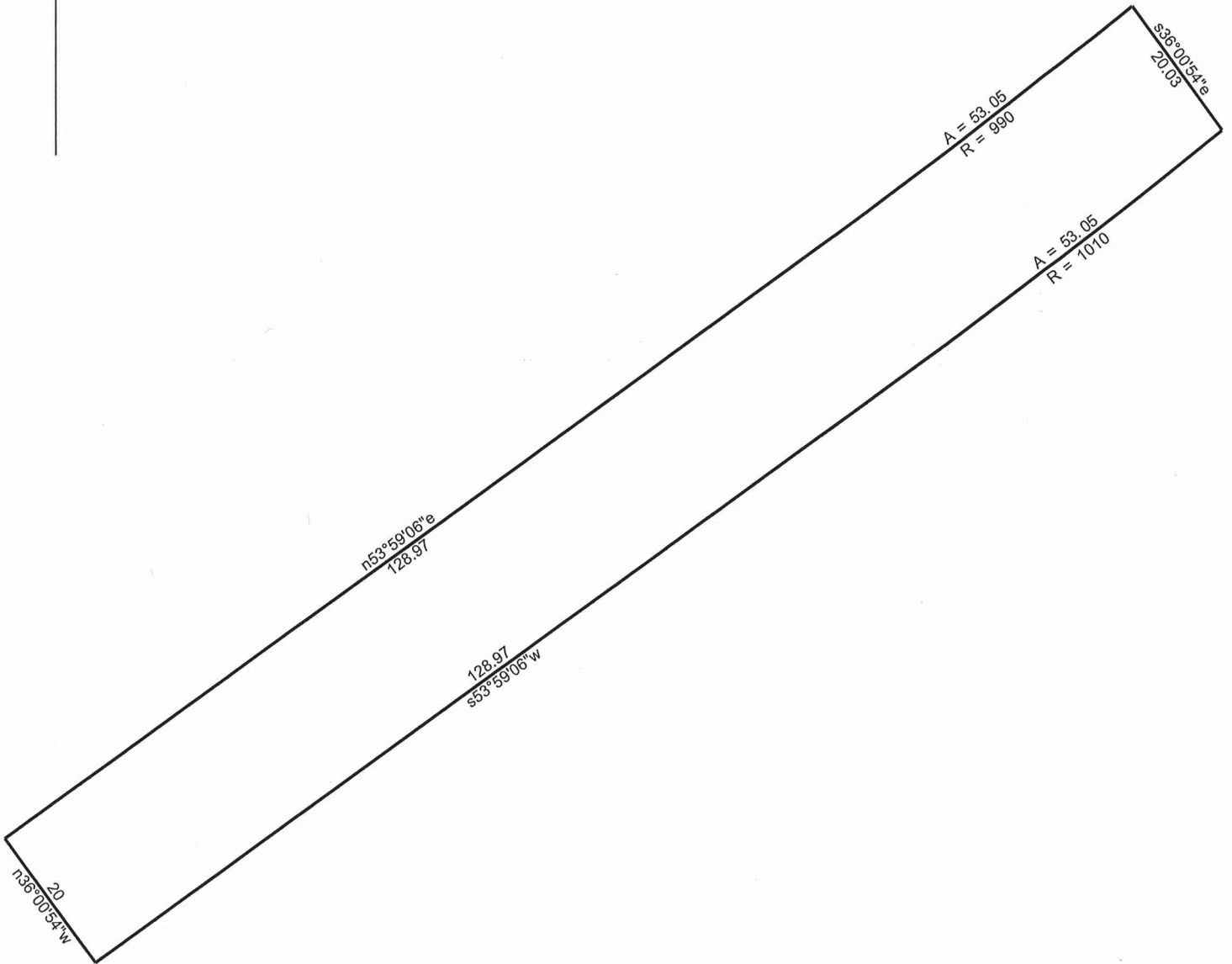
02 s22.3233w 191.24

03 s83.5438e 182.06

04 s34.0059e 58.61

05 s55.5901w 308.09

06 n36.0054w 80.55



**PARCEL G**

2/6/2020

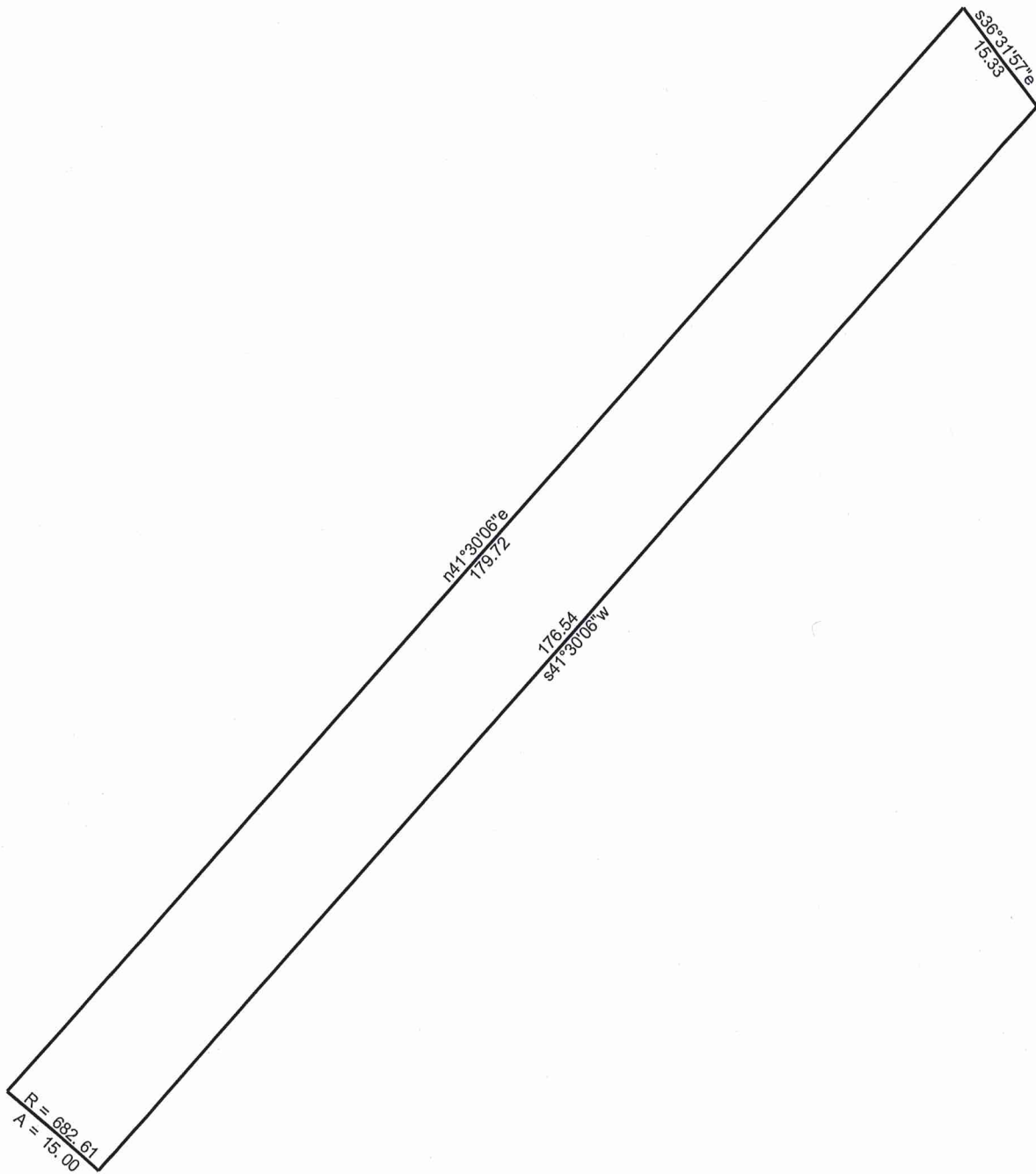
Scale: 1 inch= 21 feet

File:

Tract 1: 0.0836 Acres (3641 Sq. Feet), Closure: n00.0000e 0.00 ft. (1/202282), Perimeter=404 ft.

- 01 n36.0054w 20
- 02 n53.5906e 128.97
- 03 Lt, r=990.00, arc=53.05, chord=n52.2659e 53.04
- 04 s36.0054e 20.03
- 05 Rt, r=1010.00, arc=53.05, chord=s52.2849w 53.04
- 06 s53.5906w 128.97





**PARCEL H**

2/7/2020

Scale: 1 inch= 21 feet

File:

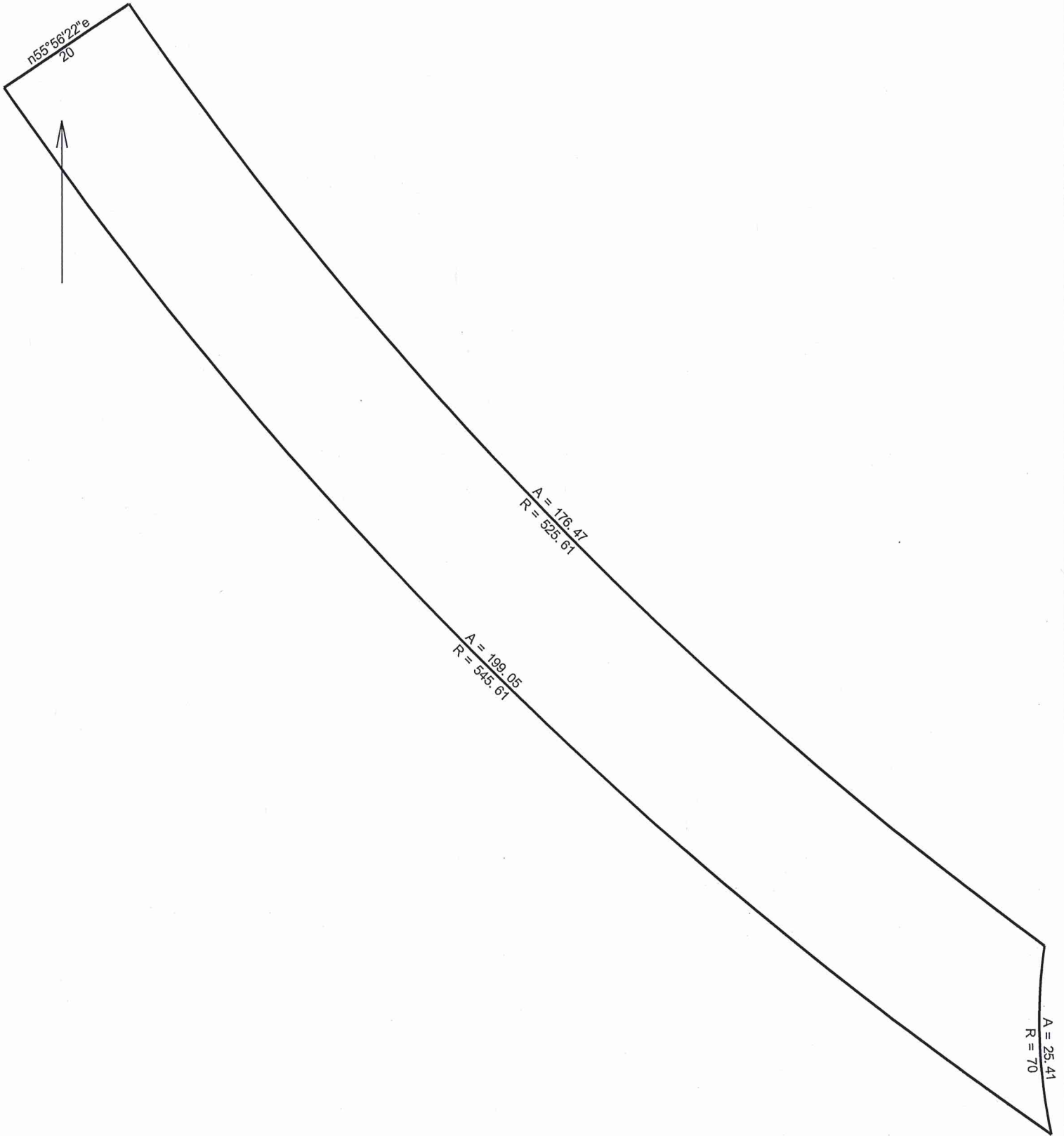
Tract 1: 0.0613 Acres (2671 Sq. Feet), Closure: n00.0000e 0.00 ft. (1/118878), Perimeter=387 ft.

01 n41.3006e 179.72

02 s36.3157e 15.33

03 s41.3006w 176.54

04 Lt, r=682.61, arc=15.00, chord=n48.2954w 15.00



**PARCEL I**

2/7/2020

Scale: 1 inch= 18 feet

File:

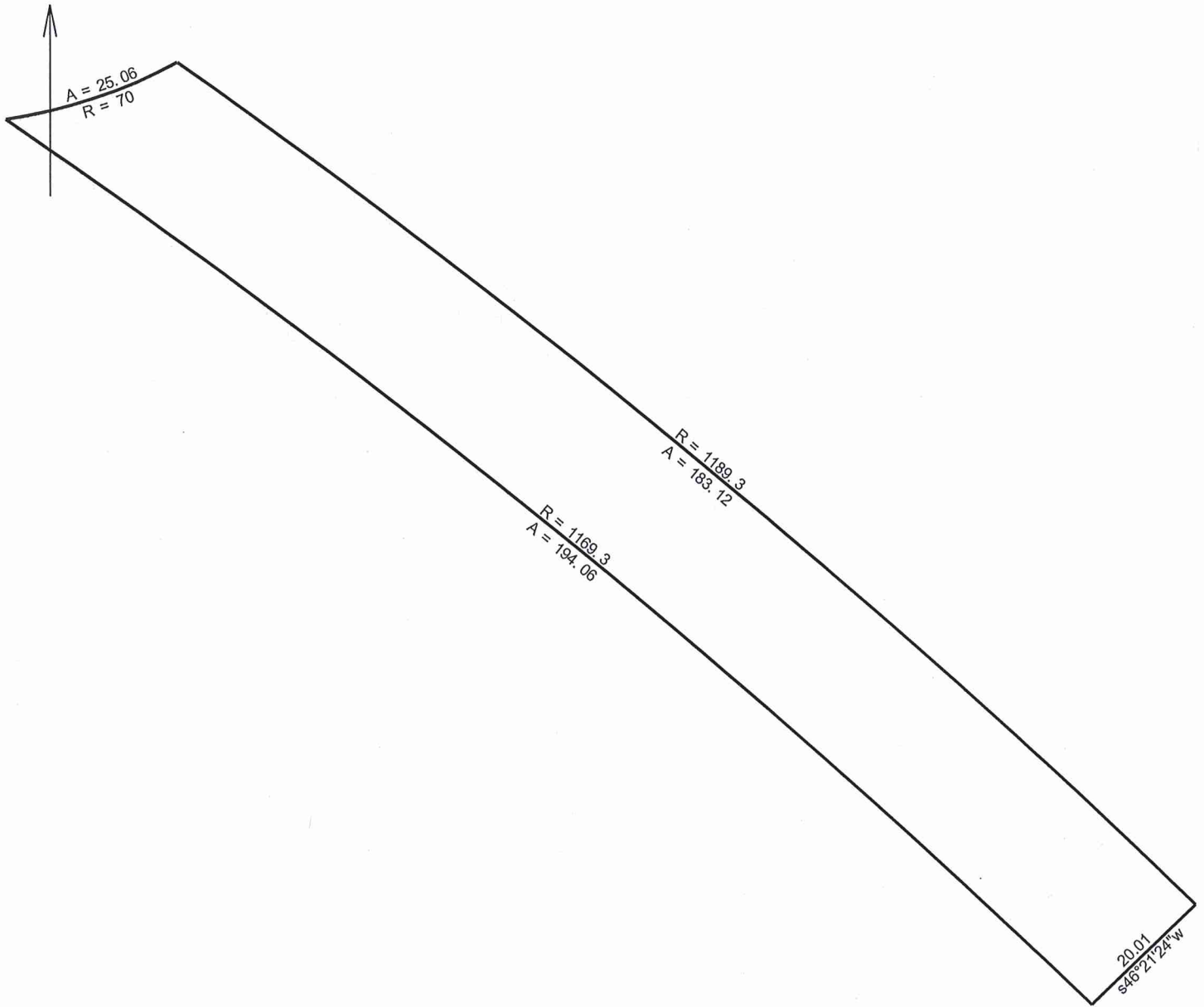
Tract 1: 0.0858 Acres (3736 Sq. Feet), Closure: n00.0000e 0.00 ft. (1/250912), Perimeter=421 ft.

01 Rt, r=545.61, arc=199.05, chord=n44.5110w 197.95

02 n55.5622e 20

03 Lt, r=525.61, arc=176.47, chord=s44.0158e 175.64

04 Lt, r=70.00, arc=25.41, chord=s02.1019e 25.27



**PARCEL J**

2/7/2020

Scale: 1 inch= 22 feet

File:

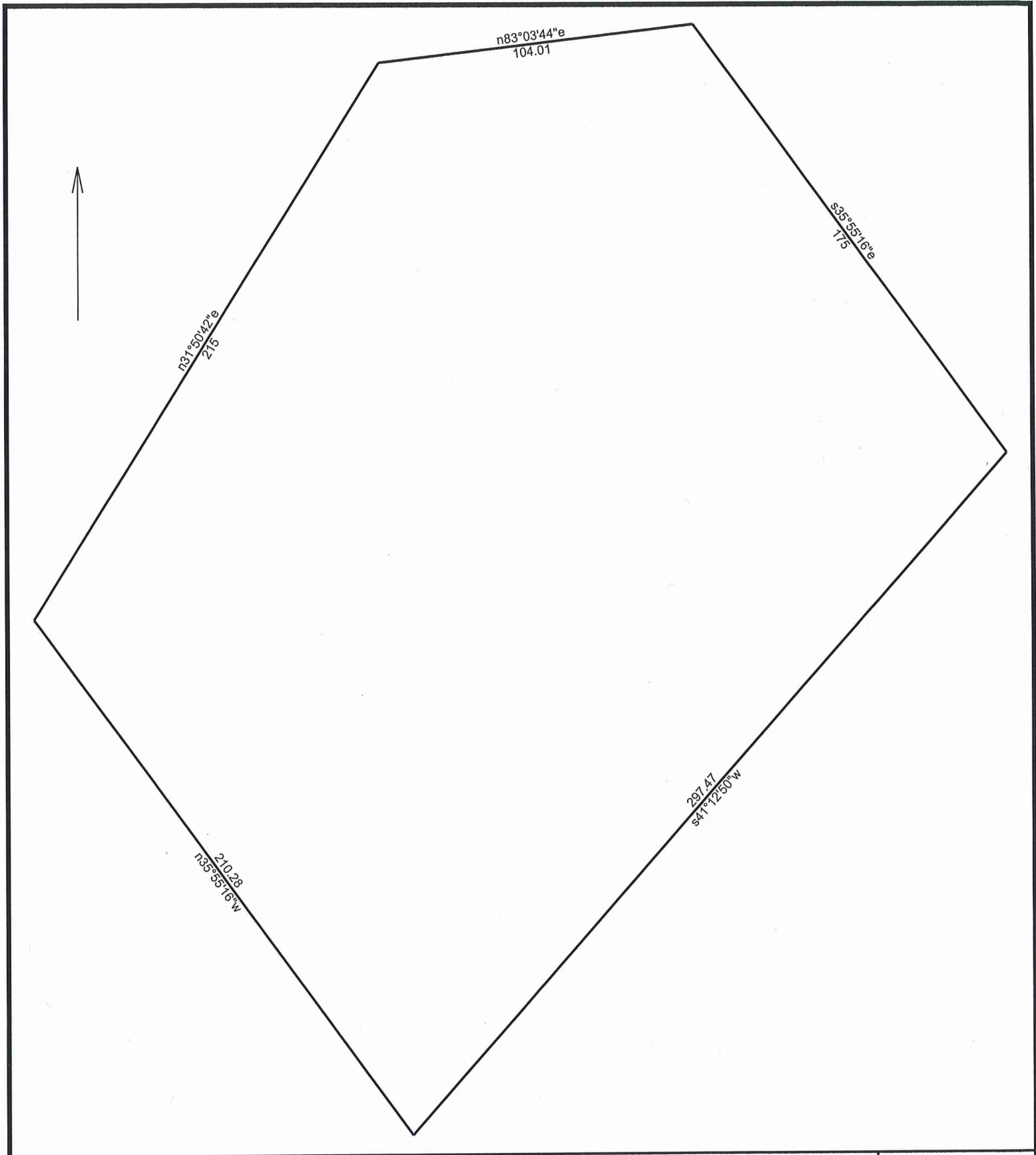
Tract 1: 0.0861 Acres (3752 Sq. Feet), Closure: s18.0508e 0.01 ft. (1/75364), Perimeter=422 ft.

01 Rt, r=1189.30, arc=183.12, chord=s50.1013e 182.94

02 s46.2124w 20.01

03 Lt, r=1169.30, arc=194.06, chord=n50.3259w 193.84

04 Lt, r=70.00, arc=25.06, chord=n71.4226e 24.93



**PARCEL K** 2/7/2020

Scale: 1 inch = 42 feet File:

Tract 1: 1.4826 Acres (64582 Sq. Feet), Closure: n75.0825e 0.01 ft. (1/195785), Perimeter=1002 ft.

- 01 n35.5516w 210.28
- 02 n31.5042e 215
- 03 n83.0344e 104.01
- 04 s35.5516e 175
- 05 s41.1250w 297.47